

The Harrington

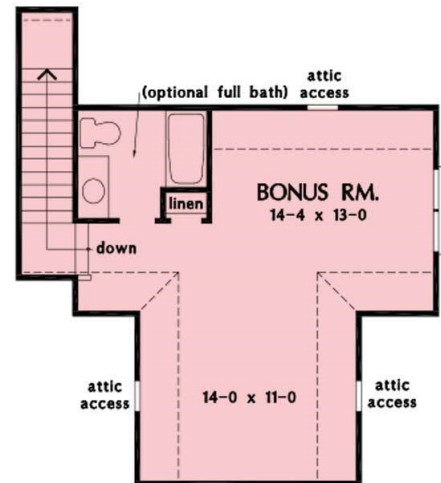


JOB PLAN
N NO. 1652



AL SF - 1891
" W X 54'4" D
N LEVEL SF - 1891

JOB PLAN
N NO. 1652



OPTIONAL BONUS ROOM & BATHROOM SF - 544

Main Level 1891 sq. ft.
Second Level 544sq. ft.
Total Sq. ft. 2435 sq. ft.

3 Bedrooms 2.5 Baths